

ARJOHUNTLEIGH

GETINGE GROUP

CLASSIC LINE

RECUMBENT BATHING SYSTEM



...with people in mind

AFFORDABLE ACCESS TO ASSISTED BATHING

Do you want to provide safe, efficient assisted bathing sessions for your residents, but have budget limitations? ArjoHuntleigh has designed a height-adjustable bathing system that meets both your ergonomic and economic objectives – *Classic Line*.

Classic Line supports ergonomic working methods for carers and secure, comfortable assisted hygiene routines for residents. The tub is broad enough to accommodate larger residents and is available in two lengths, the longer version being better suited to the lift bath trolleys used for more dependent residents. *Classic Line* integrates with the ArjoHuntleigh lift bath trolleys *Miranti* or *Bolero* and the ArjoHuntleigh lift hygiene chairs *Calypso* or *Alenti*. This smooth integration allows one carer to safely manage the entire bathing cycle. The resident stays on the seat or stretcher of the mobile lift at all stages – collection from the bed, transport, immersion in the tub and return to bed – eliminating the need for manual transfers. After the bath, the built-in disinfection shower provides the basis for stringent system hygiene routines.

The bathing system can be supplied with optional automatic filling and/or air spa, which delivers warm air into the tub from strategically placed brass air jets for a truly relaxing effect. *Classic Line* – a bathing system in line with limited budgets.





Raise ergonomic standards

The height-adjustable tub allows carers to perform routines at the correct working height.



Easy control

All functions are controlled from the easy-to-understand foot-end panel.



Comfortable showering

At 2.5 metres long, the shower hose provides optimum access for hair washing routines.



Individual support

The adjustable foot support ensures personalised comfort and safety for the resident.



Feeling secure in the tub

Internal side grips give the resident security and reassurance within easy reach.



Efficient cleaning/disinfection

The disinfection shower gives the right dosage of disinfectant/water.



Built-in safeguard

Closing the safety valve shuts down the disinfection system to prevent unauthorised use.

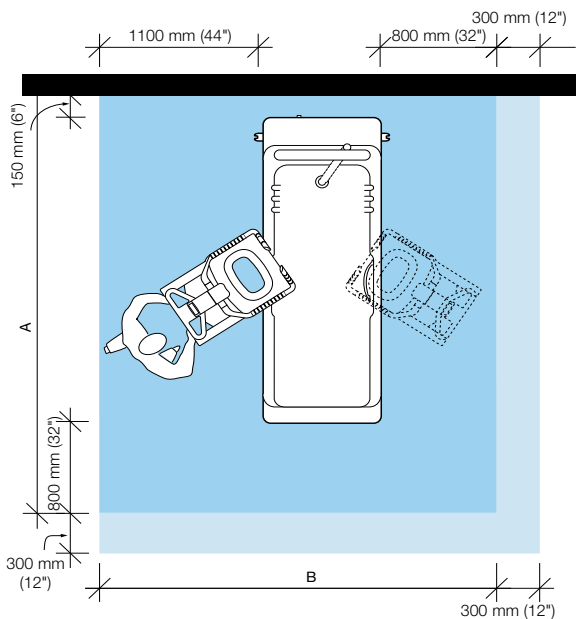


Smart & safe storage

The disinfectant bottle is safely stored away in its own integrated compartment.

PRODUCT SPECIFICATIONS

Space requirement



18675	A=2930 mm B=2790 mm	18690	A=3100 mm B=2790 mm
--------------	------------------------	--------------	------------------------

- Blue area shows the minimum working area required for the staff to be able to use the mechanical aids in an ergonomic way from one side.
- Light blue area shows required extension of working area to facilitate activities from either side to provide adequate access for the resident, mechanical aid and assisting carer.

Mobility Gallery

Suitable for Albert, Barbara, Carl, Doris and Emma



- A Albert**, who is ambulatory and independent.
- B Barbara**, who can support herself to some degree.
- C Carl**, who sits in a wheelchair and has little capacity to support himself.
- D Doris**, who has no capacity to support herself.
- E Emma**, who is almost completely bedridden and totally dependant.

Please contact ArjoHuntleigh for further information on the Mobility Gallery™.

Product information

Product information	18675	18690
Tub model No.	18675	18690
Tub length	1715 mm (67 ½")	1885 mm (74 ¼")
Total length	1980 mm (78")	2150 mm (84 ½")
Tub height	490 mm (19 ¼")	490 mm (19.3")
Working height min.	650 mm (25 ½")	650 mm (25 ½")
Working height max.	1050 mm (41 ¼")	1050 mm (41 ¼")
Panel height min.	885 mm (34 ¾")	885 mm (34 ¾")
Panel height max.	1285 mm (51")	1285 mm (51")
Tub width	780 mm (30 ¾")	780 mm (30 ¾")
Panel width	890 mm (35")	890 mm (35")
Contents (approx.) l	270 l (71 ¼ gal*)	300 l (79 ½ gal*)
Weight (approx.) kg	110 kg (242 ½ lbs)	120 kg (264 ½ lbs)

* US Gallon

Options

Mixers



Thermostatic mixer
1/2" and 3/4"

Peripheral equipment

Air-pearl bath

12 air jets of brass in chrome in the bottom of the tub, optimized to fit the form of the body. Whirlpool compressor 230 Volts, 1.1 KW, max. air capacity 350 L/min, warm air emission 40° - 50° C, routing of airflow in plastic tubes. Intensity can be regulated by a membrane keyboard. Disinfection using available tub instrument panel.

Automatic filling of the tub

Membrane push button for automatic filling of the tub up to an adjustable bath water level within the tub (only available with console with integrated thermostat mixer).

Only ArjoHuntleigh designed parts, which are designed specifically for the purpose, should be used on the equipment and products supplied by ArjoHuntleigh. As our policy is one of continuous development we reserve the right to modify designs and specifications without prior notice.

® and ™ are trademarks of the ArjoHuntleigh group of companies.
© ArjoHuntleigh, 2011

ARJOHUNTLEIGH

GETINGE GROUP

www.ArjoHuntleigh.co.uk

ArjoHuntleigh AB
Hans Michelsensgatan 10
SE-211 20 MALMÖ
SWEDEN
Phone: +46 10 335 45 00

GETINGE GROUP is a leading global provider of products and systems that contribute to quality enhancement and cost efficiency within healthcare and life sciences. We operate under the three brands of **ArjoHuntleigh**, **GETINGE** and **MAQUET**. **ArjoHuntleigh** focuses on patient mobility and wound management solutions. **GETINGE** provides solutions for infection control within healthcare and contamination prevention within life sciences. **MAQUET** specializes in solutions, therapies and products for surgical interventions and intensive care.